

Aurora Plush

Technical Specifications

Composition: 50% POLYESTER, 35% ACRYLIC, 15% POLYAMIDE

Width: 140 cm. UNE EN 1773

Weight m2: 410 g/m2

Tear resistance: > 20 N (BS 4303) – > 3 (DIN 53859-5)

Tensile strength: > 350N (ISO 13934-1)

Seam slippage: Warp: < 4 (BS 3320)
Weft: < 6 (BS 53868) PR EN ISO 13936-2 (mm)

Abrasion resistance: 200,000 cycles UNE EN ISO 12947

Pilling resistance: 5 (5 max) no pilling (ISO DIS 12945-2)

Color fastness to rubbing: 4 (5 max) good (ISO 105-X12)

Color fastness to light: 6 good (ISO 105-B02)



The fabric with a protective coating is stain-resistant and easy to clean with just water.

It provides everyday comfort, durability, and a long-lasting fresh look—no worries about stains.



AURORA 101



AURORA 104



AURORA 108



AURORA 111



AURORA 113



AURORA 114



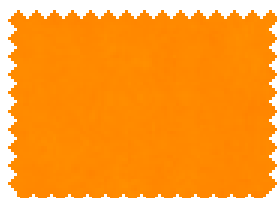
AURORA 115



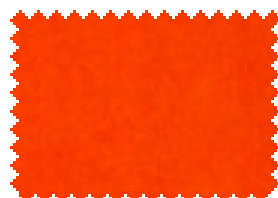
AURORA 116



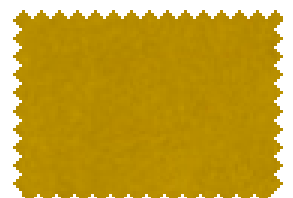
AURORA 117



AURORA 118



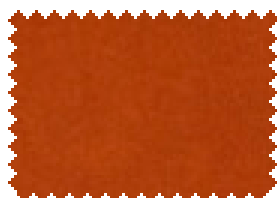
AURORA 119



AURORA 120



AURORA 121



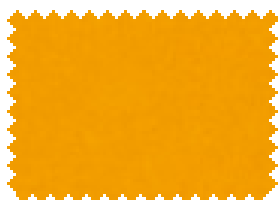
AURORA 125



AURORA 127



AURORA 128



AURORA 129



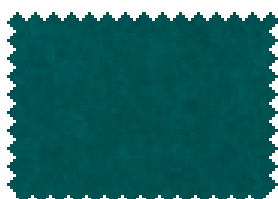
AURORA 130



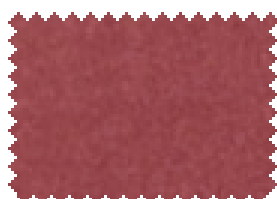
AURORA 131



AURORA 132



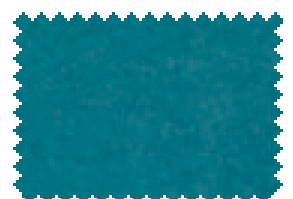
AURORA 901



AURORA 904



AURORA 907



AURORA 909

